

Detaillierter Bericht der Verarbeitung von G.D.V. Kirlian -Aufnahmen im Programm GDV Scientific Laboratory

Datum und Zeit der Datenverarbeitung: 17.05.2008 18:06:00

G.D.V. Kirlian -image processing parameters

Rauschfilterparameter:

Rel. Rauschpegel (%): 100%

Hintergrundintensität: Mittelwert + RMS

Min. Fragmentfläche: 30

Arbeitsradius: 0

Mittelpunkt des Leuchtens:

Im Mittelpunkt der inneren Kontur

Die folgenden G.D.V. Kirlian -Parameter der G.D.V. Kirlian -Aufnahmen wurden berechnet:

Fläche

Mittlere Intensität

Entropie der Isolinie

Statistischer Vergleich von 2 Ereignissen der statisch G.D.V. Kirlian -Aufnahmen wurde fertiggestellt:

mit Ingeniumbehandlung

D:\GDVDataWald\ingenium Test\Lucia\0001 (2008-05-17 15h55m56s).bmp
D:\GDVDataWald\ingenium Test\Lucia\0002 (2008-05-17 15h55m59s).bmp
D:\GDVDataWald\ingenium Test\Lucia\0003 (2008-05-17 15h56m02s).bmp
D:\GDVDataWald\ingenium Test\Lucia\0004 (2008-05-17 15h56m05s).bmp
D:\GDVDataWald\ingenium Test\Lucia\0005 (2008-05-17 15h56m08s).bmp
D:\GDVDataWald\ingenium Test\Lucia\0006 (2008-05-17 15h56m11s).bmp
D:\GDVDataWald\ingenium Test\Lucia\0007 (2008-05-17 15h56m14s).bmp
D:\GDVDataWald\ingenium Test\Lucia\0008 (2008-05-17 15h56m18s).bmp
D:\GDVDataWald\ingenium Test\Lucia\0009 (2008-05-17 15h56m21s).bmp
D:\GDVDataWald\ingenium Test\Lucia\0010 (2008-05-17 15h56m24s).bmp
D:\GDVDataWald\ingenium Test\Lucia\0011 (2008-05-17 15h56m27s).bmp
D:\GDVDataWald\ingenium Test\Lucia\0012 (2008-05-17 15h56m30s).bmp
D:\GDVDataWald\ingenium Test\Lucia\0013 (2008-05-17 15h56m33s).bmp
D:\GDVDataWald\ingenium Test\Lucia\0014 (2008-05-17 15h56m36s).bmp
D:\GDVDataWald\ingenium Test\Lucia\0015 (2008-05-17 15h56m39s).bmp
D:\GDVDataWald\ingenium Test\Lucia\0016 (2008-05-17 15h56m42s).bmp
D:\GDVDataWald\ingenium Test\Lucia\0017 (2008-05-17 15h56m46s).bmp
D:\GDVDataWald\ingenium Test\Lucia\0018 (2008-05-17 15h56m49s).bmp
D:\GDVDataWald\ingenium Test\Lucia\0019 (2008-05-17 15h56m52s).bmp
D:\GDVDataWald\ingenium Test\Lucia\0020 (2008-05-17 15h56m55s).bmp
D:\GDVDataWald\ingenium Test\Lucia\0021 (2008-05-17 15h56m58s).bmp

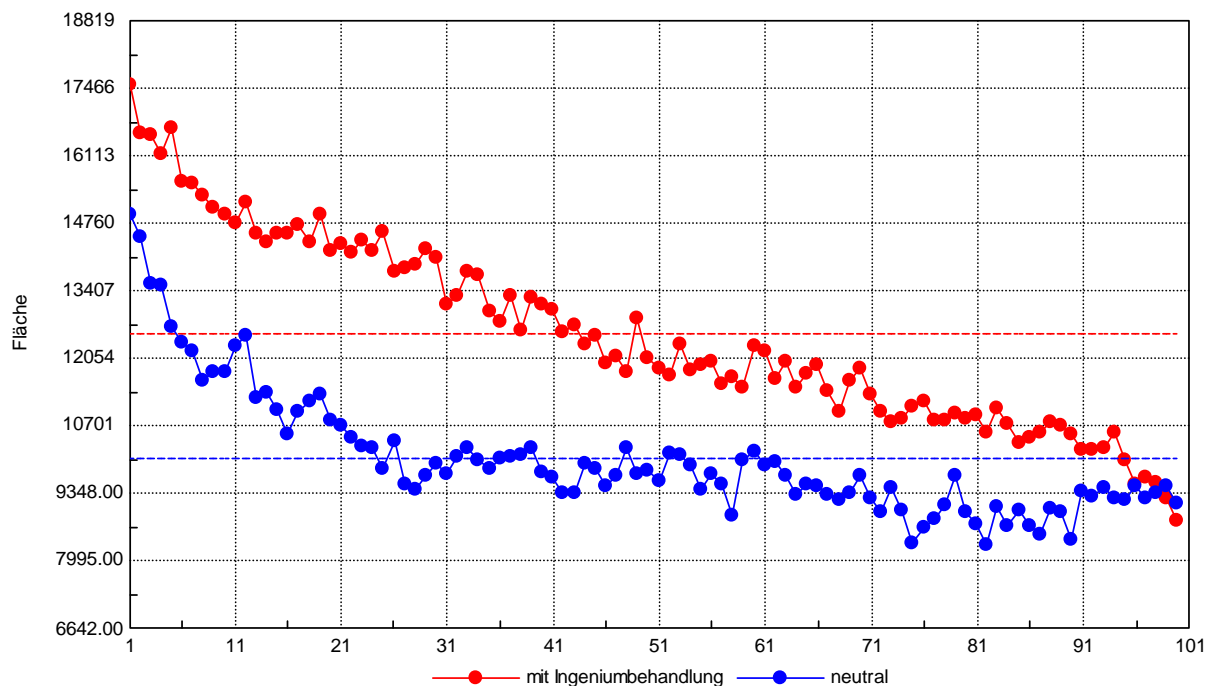
D:\GDVDataWald\ingenium Test\Lucia\0073 (2008-05-17 15h59m40s).bmp
D:\GDVDataWald\ingenium Test\Lucia\0074 (2008-05-17 15h59m43s).bmp
D:\GDVDataWald\ingenium Test\Lucia\0075 (2008-05-17 15h59m46s).bmp
D:\GDVDataWald\ingenium Test\Lucia\0076 (2008-05-17 15h59m49s).bmp
D:\GDVDataWald\ingenium Test\Lucia\0077 (2008-05-17 15h59m53s).bmp
D:\GDVDataWald\ingenium Test\Lucia\0078 (2008-05-17 15h59m56s).bmp
D:\GDVDataWald\ingenium Test\Lucia\0079 (2008-05-17 15h59m59s).bmp
D:\GDVDataWald\ingenium Test\Lucia\0080 (2008-05-17 16h00m02s).bmp
D:\GDVDataWald\ingenium Test\Lucia\0081 (2008-05-17 16h00m05s).bmp
D:\GDVDataWald\ingenium Test\Lucia\0082 (2008-05-17 16h00m08s).bmp
D:\GDVDataWald\ingenium Test\Lucia\0083 (2008-05-17 16h00m11s).bmp
D:\GDVDataWald\ingenium Test\Lucia\0084 (2008-05-17 16h00m14s).bmp
D:\GDVDataWald\ingenium Test\Lucia\0085 (2008-05-17 16h00m18s).bmp
D:\GDVDataWald\ingenium Test\Lucia\0086 (2008-05-17 16h00m21s).bmp
D:\GDVDataWald\ingenium Test\Lucia\0087 (2008-05-17 16h00m24s).bmp
D:\GDVDataWald\ingenium Test\Lucia\0088 (2008-05-17 16h00m27s).bmp
D:\GDVDataWald\ingenium Test\Lucia\0089 (2008-05-17 16h00m30s).bmp
D:\GDVDataWald\ingenium Test\Lucia\0090 (2008-05-17 16h00m33s).bmp
D:\GDVDataWald\ingenium Test\Lucia\0091 (2008-05-17 16h00m36s).bmp
D:\GDVDataWald\ingenium Test\Lucia\0092 (2008-05-17 16h00m39s).bmp
D:\GDVDataWald\ingenium Test\Lucia\0093 (2008-05-17 16h00m42s).bmp
D:\GDVDataWald\ingenium Test\Lucia\0094 (2008-05-17 16h00m46s).bmp
D:\GDVDataWald\ingenium Test\Lucia\0095 (2008-05-17 16h00m49s).bmp
D:\GDVDataWald\ingenium Test\Lucia\0096 (2008-05-17 16h00m52s).bmp
D:\GDVDataWald\ingenium Test\Lucia\0097 (2008-05-17 16h00m55s).bmp
D:\GDVDataWald\ingenium Test\Lucia\0098 (2008-05-17 16h00m58s).bmp
D:\GDVDataWald\ingenium Test\Lucia\0099 (2008-05-17 16h01m01s).bmp
D:\GDVDataWald\ingenium Test\Lucia\0100 (2008-05-17 16h01m04s).bmp

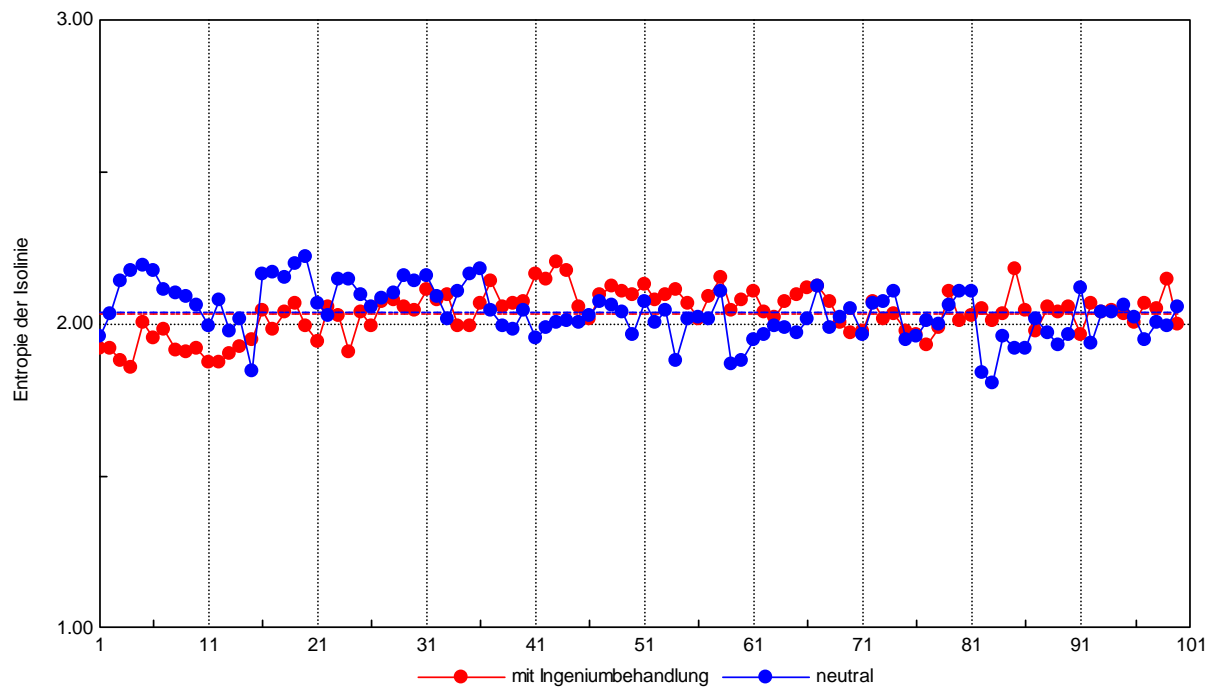
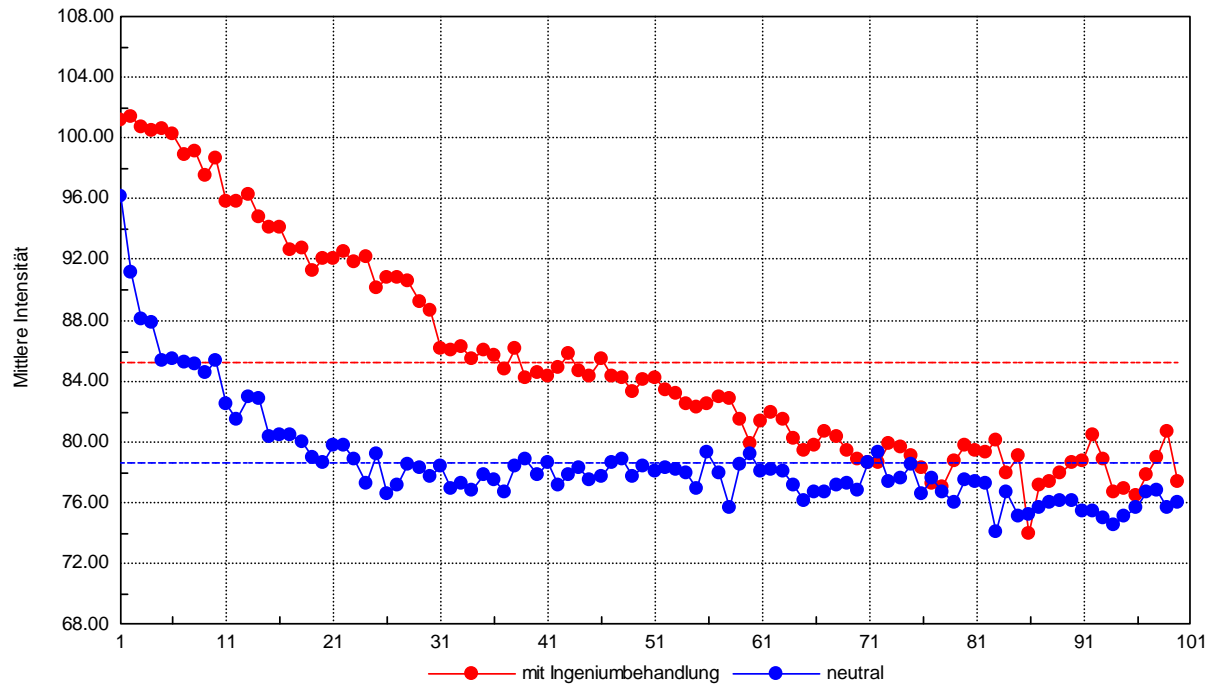
neutral

D:\GDVDataWald\ingenium Test\Lucia neutral\0001 (2008-05-17 17h57m05s).bmp
D:\GDVDataWald\ingenium Test\Lucia neutral\0002 (2008-05-17 17h57m08s).bmp
D:\GDVDataWald\ingenium Test\Lucia neutral\0003 (2008-05-17 17h57m11s).bmp
D:\GDVDataWald\ingenium Test\Lucia neutral\0004 (2008-05-17 17h57m14s).bmp
D:\GDVDataWald\ingenium Test\Lucia neutral\0005 (2008-05-17 17h57m17s).bmp
D:\GDVDataWald\ingenium Test\Lucia neutral\0006 (2008-05-17 17h57m20s).bmp
D:\GDVDataWald\ingenium Test\Lucia neutral\0007 (2008-05-17 17h57m24s).bmp
D:\GDVDataWald\ingenium Test\Lucia neutral\0008 (2008-05-17 17h57m27s).bmp
D:\GDVDataWald\ingenium Test\Lucia neutral\0009 (2008-05-17 17h57m30s).bmp
D:\GDVDataWald\ingenium Test\Lucia neutral\0010 (2008-05-17 17h57m33s).bmp
D:\GDVDataWald\ingenium Test\Lucia neutral\0011 (2008-05-17 17h57m36s).bmp
D:\GDVDataWald\ingenium Test\Lucia neutral\0012 (2008-05-17 17h57m39s).bmp
D:\GDVDataWald\ingenium Test\Lucia neutral\0013 (2008-05-17 17h57m42s).bmp
D:\GDVDataWald\ingenium Test\Lucia neutral\0014 (2008-05-17 17h57m45s).bmp
D:\GDVDataWald\ingenium Test\Lucia neutral\0015 (2008-05-17 17h57m48s).bmp
D:\GDVDataWald\ingenium Test\Lucia neutral\0016 (2008-05-17 17h57m52s).bmp
D:\GDVDataWald\ingenium Test\Lucia neutral\0017 (2008-05-17 17h57m55s).bmp
D:\GDVDataWald\ingenium Test\Lucia neutral\0018 (2008-05-17 17h57m58s).bmp
D:\GDVDataWald\ingenium Test\Lucia neutral\0019 (2008-05-17 17h58m01s).bmp
D:\GDVDataWald\ingenium Test\Lucia neutral\0020 (2008-05-17 17h58m04s).bmp
D:\GDVDataWald\ingenium Test\Lucia neutral\0021 (2008-05-17 17h58m07s).bmp

D:\GDVDataWald\ingenium Test\Lucia neutral\0073 (2008-05-17 18h00m49s).bmp
D:\GDVDataWald\ingenium Test\Lucia neutral\0074 (2008-05-17 18h00m52s).bmp
D:\GDVDataWald\ingenium Test\Lucia neutral\0075 (2008-05-17 18h00m56s).bmp
D:\GDVDataWald\ingenium Test\Lucia neutral\0076 (2008-05-17 18h00m59s).bmp
D:\GDVDataWald\ingenium Test\Lucia neutral\0077 (2008-05-17 18h01m02s).bmp
D:\GDVDataWald\ingenium Test\Lucia neutral\0078 (2008-05-17 18h01m05s).bmp
D:\GDVDataWald\ingenium Test\Lucia neutral\0079 (2008-05-17 18h01m08s).bmp
D:\GDVDataWald\ingenium Test\Lucia neutral\0080 (2008-05-17 18h01m11s).bmp
D:\GDVDataWald\ingenium Test\Lucia neutral\0081 (2008-05-17 18h01m14s).bmp
D:\GDVDataWald\ingenium Test\Lucia neutral\0082 (2008-05-17 18h01m17s).bmp
D:\GDVDataWald\ingenium Test\Lucia neutral\0083 (2008-05-17 18h01m20s).bmp
D:\GDVDataWald\ingenium Test\Lucia neutral\0084 (2008-05-17 18h01m24s).bmp
D:\GDVDataWald\ingenium Test\Lucia neutral\0085 (2008-05-17 18h01m27s).bmp
D:\GDVDataWald\ingenium Test\Lucia neutral\0086 (2008-05-17 18h01m30s).bmp
D:\GDVDataWald\ingenium Test\Lucia neutral\0087 (2008-05-17 18h01m33s).bmp
D:\GDVDataWald\ingenium Test\Lucia neutral\0088 (2008-05-17 18h01m36s).bmp
D:\GDVDataWald\ingenium Test\Lucia neutral\0089 (2008-05-17 18h01m39s).bmp
D:\GDVDataWald\ingenium Test\Lucia neutral\0090 (2008-05-17 18h01m42s).bmp
D:\GDVDataWald\ingenium Test\Lucia neutral\0091 (2008-05-17 18h01m45s).bmp
D:\GDVDataWald\ingenium Test\Lucia neutral\0092 (2008-05-17 18h01m49s).bmp
D:\GDVDataWald\ingenium Test\Lucia neutral\0093 (2008-05-17 18h01m52s).bmp
D:\GDVDataWald\ingenium Test\Lucia neutral\0094 (2008-05-17 18h01m55s).bmp
D:\GDVDataWald\ingenium Test\Lucia neutral\0095 (2008-05-17 18h01m58s).bmp
D:\GDVDataWald\ingenium Test\Lucia neutral\0096 (2008-05-17 18h02m01s).bmp
D:\GDVDataWald\ingenium Test\Lucia neutral\0097 (2008-05-17 18h02m04s).bmp
D:\GDVDataWald\ingenium Test\Lucia neutral\0098 (2008-05-17 18h02m07s).bmp
D:\GDVDataWald\ingenium Test\Lucia neutral\0099 (2008-05-17 18h02m10s).bmp
D:\GDVDataWald\ingenium Test\Lucia neutral\0100 (2008-05-17 18h02m13s).bmp

Auswahl der GDV-Parameter:

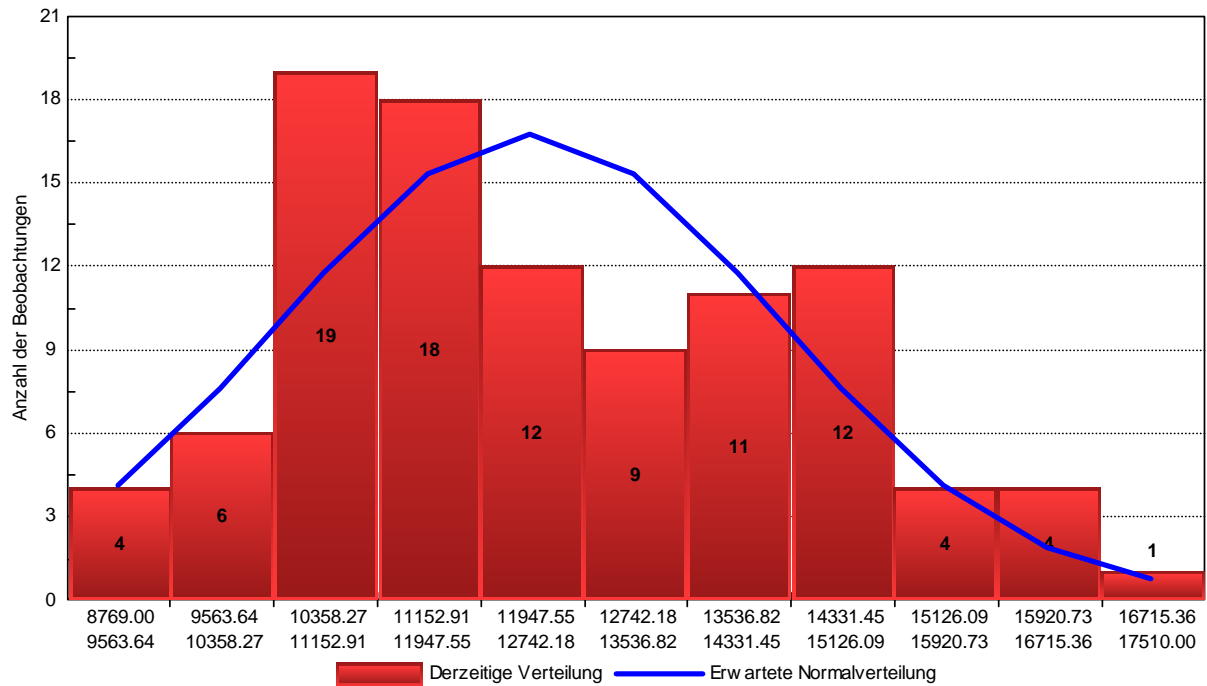




Verteilung der G.D.V. Kirlian -Parameter:

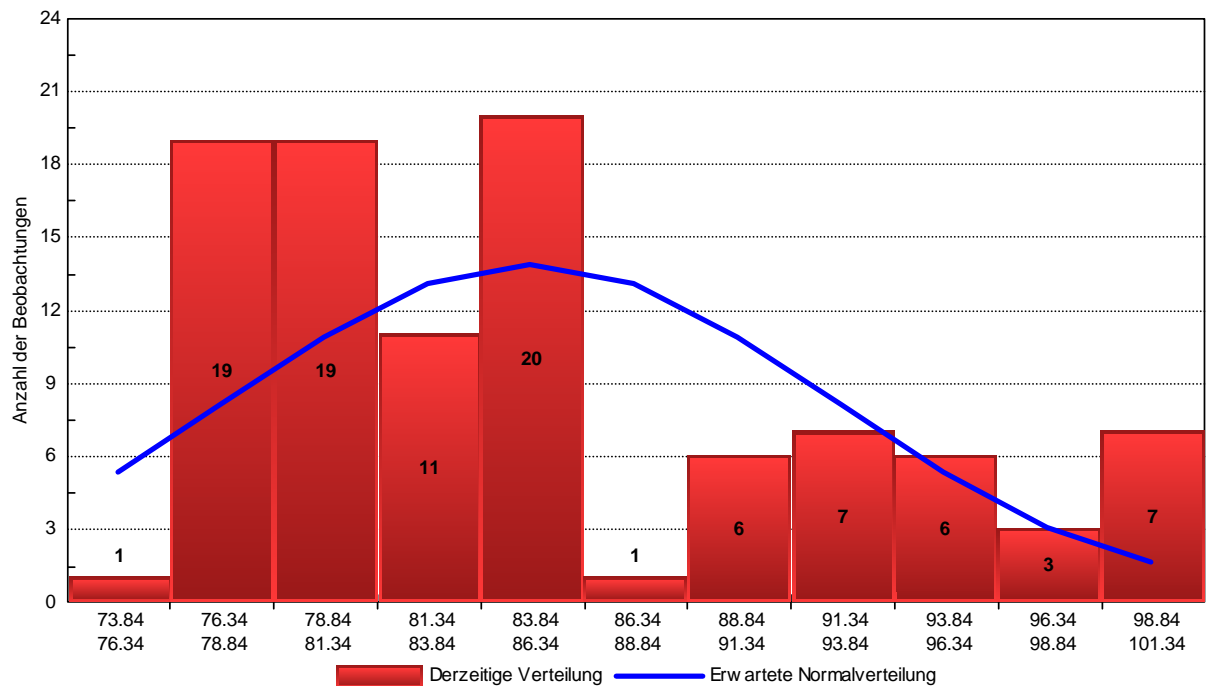
mit Ingeniumbehandlung

Fläche



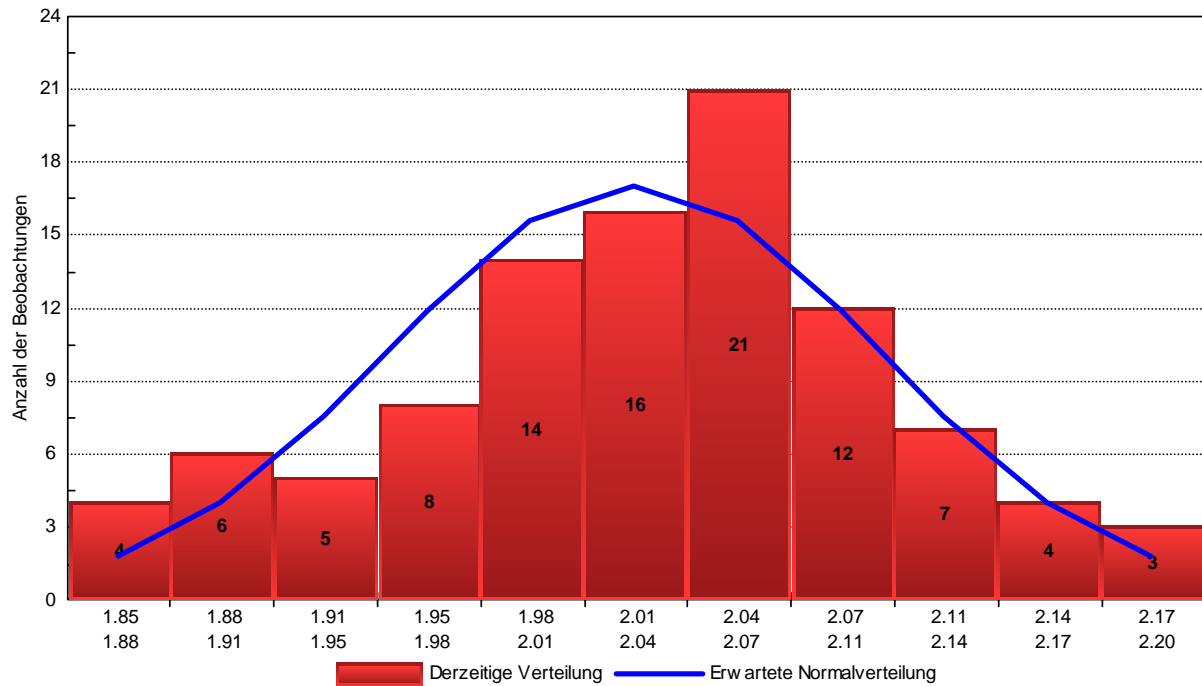
Schiefe:0.420355
 Wölbung:-0.518694
 Kolmogorov-Smirnov-Test:d = 0.0723643, p = 0.671601

Mittlere Intensität



Schiefe:0.783845
 Wölbung:-0.471137
 Kolmogorov-Smirnov-Test:d = 0.120591, p = 0.109103

Entropie der Isolinie



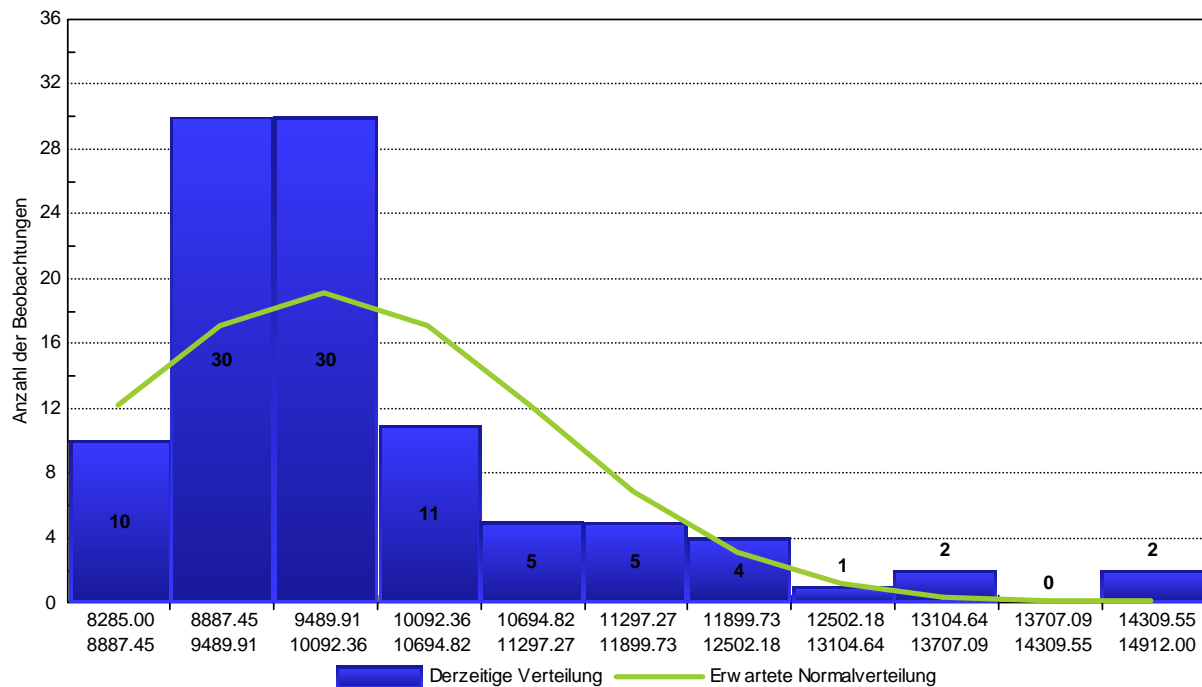
Schiefe: -0.269995

Wölbung: -0.203525

Kolmogorov-Smirnov-Test: $d = 0.0547216$, $p = 0.925586$

neutral

Fläche

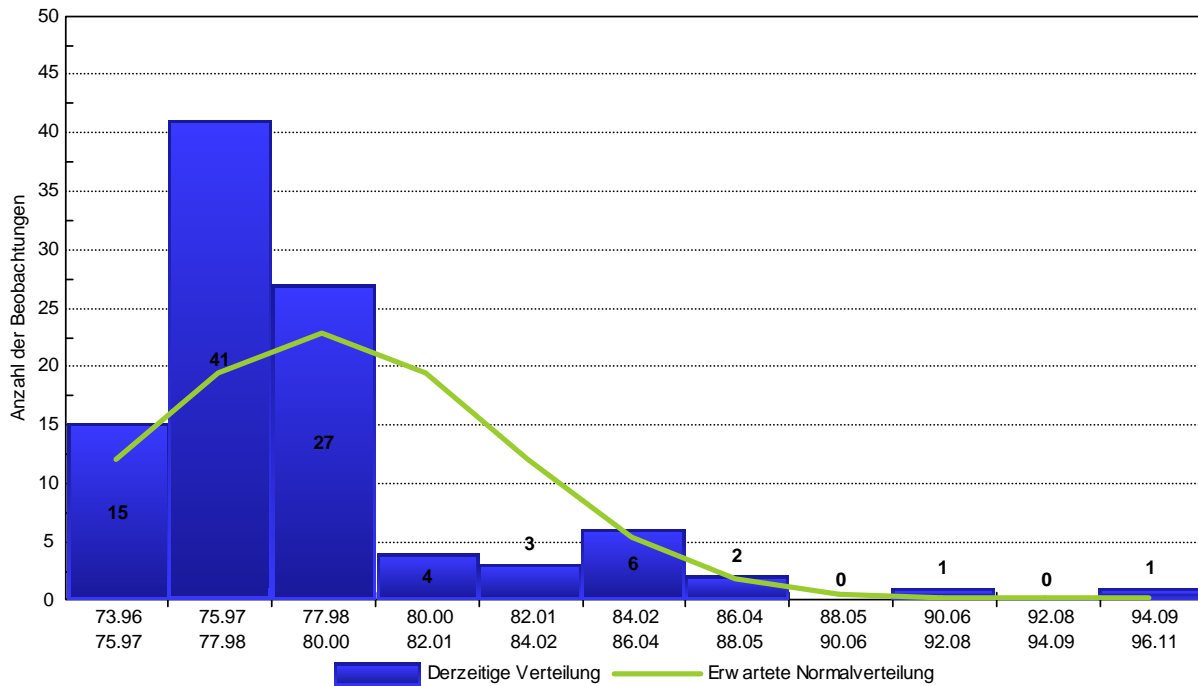


Schiefe: 1.72479

Wölbung: 3.39619

Kolmogorov-Smirnov-Test: $d = 0.129848$, $p = 0.0686329$

Mittlere Intensität

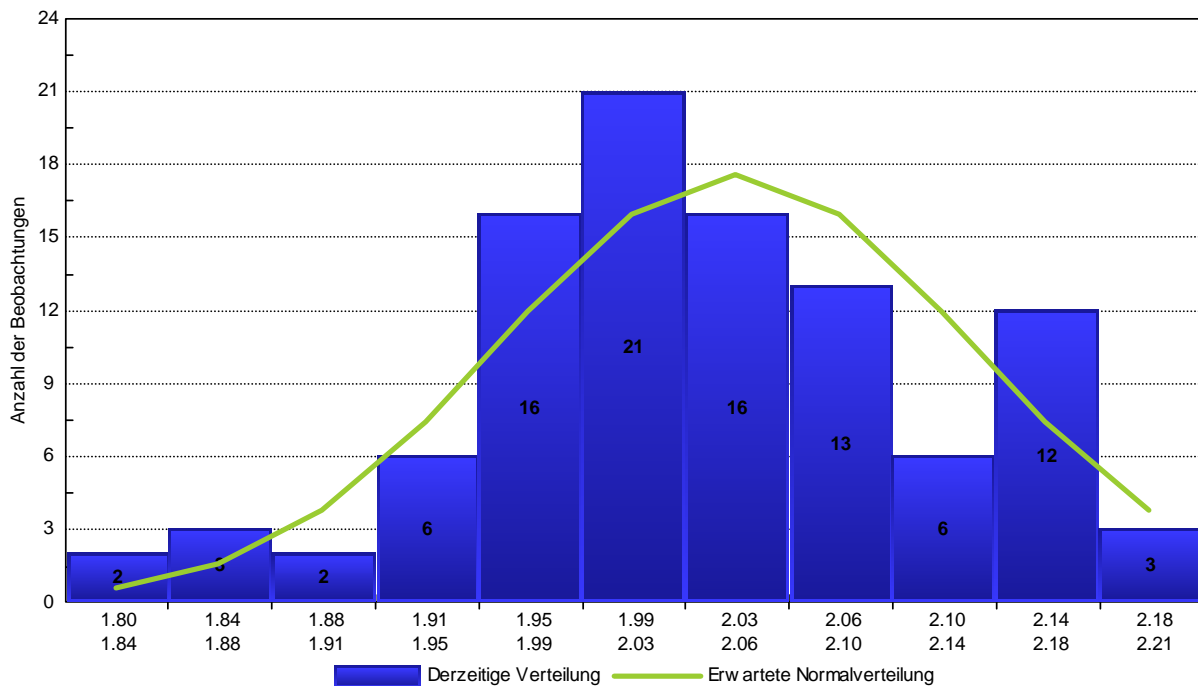


Schiefe:2.35699

Wölbung:7.09176

Kolmogorov-Smirnov-Test:d = 0.216731, p = 0.000166371

Entropie der Isolinie



Schiefe:-0.153462

Wölbung:-0.117984

Kolmogorov-Smirnov-Test:d = 0.059204, p = 0.874643

Tabellen der berechneten G.D.V. Kirlian -Parameter

mit Ingeniumbehandlung

	Fläche	Mittlere Intensität	Entropie der Isolinie
...0001 (2008-05-17 15h55m56s).bmp	1.751e+004	101	1.914
...0002 (2008-05-17 15h55m59s).bmp	1.655e+004	101.3	1.917
...0003 (2008-05-17 15h56m02s).bmp	1.652e+004	100.6	1.874
...0004 (2008-05-17 15h56m05s).bmp	1.614e+004	100.5	1.851
...0005 (2008-05-17 15h56m08s).bmp	1.666e+004	100.5	1.999
...0006 (2008-05-17 15h56m11s).bmp	1.556e+004	100.2	1.951
...0007 (2008-05-17 15h56m14s).bmp	1.553e+004	98.8	1.98
...0008 (2008-05-17 15h56m18s).bmp	1.528e+004	99.06	1.908
...0009 (2008-05-17 15h56m21s).bmp	1.506e+004	97.48	1.905
...0010 (2008-05-17 15h56m24s).bmp	1.492e+004	98.64	1.913
...0011 (2008-05-17 15h56m27s).bmp	1.473e+004	95.8	1.869
...0012 (2008-05-17 15h56m30s).bmp	1.518e+004	95.7	1.867
...0013 (2008-05-17 15h56m33s).bmp	1.454e+004	96.23	1.899
...0014 (2008-05-17 15h56m36s).bmp	1.435e+004	94.71	1.919
...0015 (2008-05-17 15h56m39s).bmp	1.454e+004	94.08	1.944
...0016 (2008-05-17 15h56m42s).bmp	1.452e+004	94.01	2.043
...0017 (2008-05-17 15h56m46s).bmp	1.47e+004	92.58	1.977
...0018 (2008-05-17 15h56m49s).bmp	1.437e+004	92.64	2.032
...0019 (2008-05-17 15h56m52s).bmp	1.493e+004	91.16	2.065
...0020 (2008-05-17 15h56m55s).bmp	1.417e+004	92.04	1.986
...0021 (2008-05-17 15h56m58s).bmp	1.432e+004	92.01	1.938
...0022 (2008-05-17 15h57m01s).bmp	1.415e+004	92.49	2.054
...0023 (2008-05-17 15h57m04s).bmp	1.439e+004	91.74	2.02
...0024 (2008-05-17 15h57m07s).bmp	1.418e+004	92.15	1.901
...0025 (2008-05-17 15h57m10s).bmp	1.458e+004	90.05	2.034

15h57m10s).bmp			
...0026 (2008-05-17 15h57m14s).bmp	1.377e+004	90.74	1.986
...0027 (2008-05-17 15h57m17s).bmp	1.386e+004	90.76	2.066
...0028 (2008-05-17 15h57m20s).bmp	1.393e+004	90.49	2.072
...0029 (2008-05-17 15h57m23s).bmp	1.422e+004	89.1	2.051
...0030 (2008-05-17 15h57m26s).bmp	1.405e+004	88.54	2.039
...0031 (2008-05-17 15h57m29s).bmp	1.312e+004	86.1	2.108
...0032 (2008-05-17 15h57m32s).bmp	1.329e+004	85.99	2.075
...0033 (2008-05-17 15h57m35s).bmp	1.376e+004	86.18	2.093
...0034 (2008-05-17 15h57m39s).bmp	1.37e+004	85.37	1.988
...0035 (2008-05-17 15h57m42s).bmp	1.298e+004	85.95	1.989
...0036 (2008-05-17 15h57m45s).bmp	1.278e+004	85.58	2.061
...0037 (2008-05-17 15h57m48s).bmp	1.329e+004	84.72	2.135
...0038 (2008-05-17 15h57m51s).bmp	1.258e+004	86.04	2.049
...0039 (2008-05-17 15h57m54s).bmp	1.326e+004	84.14	2.063
...0040 (2008-05-17 15h57m57s).bmp	1.312e+004	84.51	2.068
...0041 (2008-05-17 15h58m00s).bmp	1.302e+004	84.2	2.158
...0042 (2008-05-17 15h58m03s).bmp	1.257e+004	84.85	2.144
...0043 (2008-05-17 15h58m07s).bmp	1.27e+004	85.67	2.201
...0044 (2008-05-17 15h58m10s).bmp	1.232e+004	84.52	2.173
...0045 (2008-05-17 15h58m13s).bmp	1.25e+004	84.24	2.053
...0046 (2008-05-17 15h58m16s).bmp	1.192e+004	85.39	2.014
...0047 (2008-05-17 15h58m19s).bmp	1.207e+004	84.22	2.091
...0048 (2008-05-17 15h58m22s).bmp	1.176e+004	84.16	2.12
...0049 (2008-05-17 15h58m25s).bmp	1.282e+004	83.18	2.102
...0050 (2008-05-17	1.204e+004	83.96	2.091

15h58m28s).bmp			
...0051 (2008-05-17 15h58m32s).bmp	1.184e+004	84.08	2.123
...0052 (2008-05-17 15h58m35s).bmp	1.167e+004	83.36	2.075
...0053 (2008-05-17 15h58m38s).bmp	1.232e+004	83.13	2.089
...0054 (2008-05-17 15h58m41s).bmp	1.178e+004	82.43	2.107
...0055 (2008-05-17 15h58m44s).bmp	1.19e+004	82.17	2.065
...0056 (2008-05-17 15h58m47s).bmp	1.198e+004	82.4	2.009
...0057 (2008-05-17 15h58m50s).bmp	1.151e+004	82.91	2.087
...0058 (2008-05-17 15h58m53s).bmp	1.164e+004	82.71	2.151
...0059 (2008-05-17 15h58m56s).bmp	1.145e+004	81.36	2.039
...0060 (2008-05-17 15h59m00s).bmp	1.228e+004	79.79	2.077
...0061 (2008-05-17 15h59m03s).bmp	1.218e+004	81.32	2.103
...0062 (2008-05-17 15h59m06s).bmp	1.161e+004	81.84	2.032
...0063 (2008-05-17 15h59m09s).bmp	1.197e+004	81.42	2.018
...0064 (2008-05-17 15h59m12s).bmp	1.146e+004	80.09	2.071
...0065 (2008-05-17 15h59m15s).bmp	1.173e+004	79.33	2.093
...0066 (2008-05-17 15h59m18s).bmp	1.191e+004	79.7	2.116
...0067 (2008-05-17 15h59m21s).bmp	1.137e+004	80.55	2.122
...0068 (2008-05-17 15h59m25s).bmp	1.095e+004	80.21	2.069
...0069 (2008-05-17 15h59m28s).bmp	1.16e+004	79.31	1.999
...0070 (2008-05-17 15h59m31s).bmp	1.184e+004	78.82	1.967
...0071 (2008-05-17 15h59m34s).bmp	1.13e+004	78.52	1.97
...0072 (2008-05-17 15h59m37s).bmp	1.097e+004	78.53	2.068
...0073 (2008-05-17 15h59m40s).bmp	1.074e+004	79.76	2.009
...0074 (2008-05-17 15h59m43s).bmp	1.082e+004	79.57	2.027
...0075 (2008-05-17	1.108e+004	79	1.971

15h59m46s).bmp			
...0076 (2008-05-17 15h59m49s).bmp	1.119e+004	78.19	1.959
...0077 (2008-05-17 15h59m53s).bmp	1.078e+004	77.22	1.924
...0078 (2008-05-17 15h59m56s).bmp	1.079e+004	76.99	1.985
...0079 (2008-05-17 15h59m59s).bmp	1.091e+004	78.62	2.104
...0080 (2008-05-17 16h00m02s).bmp	1.081e+004	79.72	2.004
...0081 (2008-05-17 16h00m05s).bmp	1.09e+004	79.29	2.023
...0082 (2008-05-17 16h00m08s).bmp	1.056e+004	79.18	2.045
...0083 (2008-05-17 16h00m11s).bmp	1.105e+004	80.07	2.006
...0084 (2008-05-17 16h00m14s).bmp	1.071e+004	77.91	2.026
...0085 (2008-05-17 16h00m18s).bmp	1.032e+004	79.02	2.178
...0086 (2008-05-17 16h00m21s).bmp	1.046e+004	73.84	2.038
...0087 (2008-05-17 16h00m24s).bmp	1.054e+004	77.06	1.974
...0088 (2008-05-17 16h00m27s).bmp	1.076e+004	77.29	2.052
...0089 (2008-05-17 16h00m30s).bmp	1.067e+004	77.82	2.035
...0090 (2008-05-17 16h00m33s).bmp	1.052e+004	78.49	2.049
...0091 (2008-05-17 16h00m36s).bmp	1.019e+004	78.65	1.962
...0092 (2008-05-17 16h00m39s).bmp	1.018e+004	80.36	2.061
...0093 (2008-05-17 16h00m42s).bmp	1.022e+004	78.79	2.033
...0094 (2008-05-17 16h00m46s).bmp	1.053e+004	76.65	2.039
...0095 (2008-05-17 16h00m49s).bmp	9976	76.78	2.029
...0096 (2008-05-17 16h00m52s).bmp	9496	76.34	2.002
...0097 (2008-05-17 16h00m55s).bmp	9627	77.76	2.063
...0098 (2008-05-17 16h00m58s).bmp	9525	78.86	2.047
...0099 (2008-05-17 16h01m01s).bmp	9237	80.57	2.144
...0100 (2008-05-17	8769	77.24	1.992

16h01m04s).bmp			
----------------	--	--	--

neutral

	Fläche	Mittlere Intensität	Entropie der Isolinie
...0001 (2008-05-17 17h57m05s).bmp	1.491e+004	96.11	1.956
...0002 (2008-05-17 17h57m08s).bmp	1.447e+004	91.07	2.029
...0003 (2008-05-17 17h57m11s).bmp	1.352e+004	88	2.135
...0004 (2008-05-17 17h57m14s).bmp	1.35e+004	87.81	2.173
...0005 (2008-05-17 17h57m17s).bmp	1.266e+004	85.3	2.188
...0006 (2008-05-17 17h57m20s).bmp	1.236e+004	85.37	2.173
...0007 (2008-05-17 17h57m24s).bmp	1.218e+004	85.19	2.109
...0008 (2008-05-17 17h57m27s).bmp	1.16e+004	85.03	2.099
...0009 (2008-05-17 17h57m30s).bmp	1.177e+004	84.51	2.085
...0010 (2008-05-17 17h57m33s).bmp	1.176e+004	85.23	2.057
...0011 (2008-05-17 17h57m36s).bmp	1.228e+004	82.39	1.987
...0012 (2008-05-17 17h57m39s).bmp	1.25e+004	81.41	2.072
...0013 (2008-05-17 17h57m42s).bmp	1.124e+004	82.87	1.971
...0014 (2008-05-17 17h57m45s).bmp	1.133e+004	82.75	2.013
...0015 (2008-05-17 17h57m48s).bmp	1.1e+004	80.29	1.843
...0016 (2008-05-17 17h57m52s).bmp	1.051e+004	80.4	2.16
...0017 (2008-05-17 17h57m55s).bmp	1.097e+004	80.32	2.164
...0018 (2008-05-17 17h57m58s).bmp	1.115e+004	79.88	2.148
...0019 (2008-05-17 17h58m01s).bmp	1.131e+004	78.88	2.196
...0020 (2008-05-17 17h58m04s).bmp	1.077e+004	78.56	2.214
...0021 (2008-05-17 17h58m07s).bmp	1.067e+004	79.69	2.063
...0022 (2008-05-17 17h58m10s).bmp	1.044e+004	79.65	2.025
...0023 (2008-05-17 17h58m13s).bmp	1.028e+004	78.73	2.145

17h58m13s).bmp			
...0024 (2008-05-17 17h58m17s).bmp	1.022e+004	77.22	2.143
...0025 (2008-05-17 17h58m20s).bmp	9808	79.09	2.092
...0026 (2008-05-17 17h58m23s).bmp	1.038e+004	76.46	2.054
...0027 (2008-05-17 17h58m26s).bmp	9514	77.11	2.079
...0028 (2008-05-17 17h58m29s).bmp	9398	78.42	2.099
...0029 (2008-05-17 17h58m32s).bmp	9670	78.16	2.154
...0030 (2008-05-17 17h58m35s).bmp	9934	77.59	2.139
...0031 (2008-05-17 17h58m38s).bmp	9699	78.33	2.153
...0032 (2008-05-17 17h58m41s).bmp	1.006e+004	76.86	2.086
...0033 (2008-05-17 17h58m45s).bmp	1.025e+004	77.16	2.012
...0034 (2008-05-17 17h58m48s).bmp	9999	76.73	2.105
...0035 (2008-05-17 17h58m51s).bmp	9831	77.72	2.159
...0036 (2008-05-17 17h58m54s).bmp	1.001e+004	77.36	2.175
...0037 (2008-05-17 17h58m57s).bmp	1.007e+004	76.64	2.042
...0038 (2008-05-17 17h59m00s).bmp	1.009e+004	78.3	1.99
...0039 (2008-05-17 17h59m03s).bmp	1.023e+004	78.8	1.979
...0040 (2008-05-17 17h59m06s).bmp	9750	77.78	2.039
...0041 (2008-05-17 17h59m10s).bmp	9639	78.58	1.951
...0042 (2008-05-17 17h59m13s).bmp	9331	77.11	1.982
...0043 (2008-05-17 17h59m16s).bmp	9321	77.8	1.998
...0044 (2008-05-17 17h59m19s).bmp	9922	78.16	2.008
...0045 (2008-05-17 17h59m22s).bmp	9829	77.43	2.001
...0046 (2008-05-17 17h59m25s).bmp	9483	77.61	2.021
...0047 (2008-05-17 17h59m28s).bmp	9693	78.55	2.066
...0048 (2008-05-17	1.022e+004	78.73	2.059

17h59m31s).bmp			
...0049 (2008-05-17 17h59m34s).bmp	9704	77.65	2.036
...0050 (2008-05-17 17h59m38s).bmp	9799	78.34	1.961
...0051 (2008-05-17 17h59m41s).bmp	9562	77.94	2.069
...0052 (2008-05-17 17h59m44s).bmp	1.014e+004	78.14	2.001
...0053 (2008-05-17 17h59m47s).bmp	1.008e+004	78.12	2.038
...0054 (2008-05-17 17h59m50s).bmp	9892	77.82	1.876
...0055 (2008-05-17 17h59m53s).bmp	9397	76.88	2.012
...0056 (2008-05-17 17h59m56s).bmp	9719	79.26	2.018
...0057 (2008-05-17 17h59m59s).bmp	9508	77.83	2.011
...0058 (2008-05-17 18h00m03s).bmp	8868	75.62	2.101
...0059 (2008-05-17 18h00m06s).bmp	9978	78.43	1.866
...0060 (2008-05-17 18h00m09s).bmp	1.017e+004	79.11	1.875
...0061 (2008-05-17 18h00m12s).bmp	9882	77.99	1.945
...0062 (2008-05-17 18h00m15s).bmp	9953	78.08	1.961
...0063 (2008-05-17 18h00m18s).bmp	9672	77.98	1.989
...0064 (2008-05-17 18h00m21s).bmp	9284	77.07	1.981
...0065 (2008-05-17 18h00m24s).bmp	9496	76.09	1.966
...0066 (2008-05-17 18h00m27s).bmp	9468	76.6	2.014
...0067 (2008-05-17 18h00m31s).bmp	9294	76.66	2.121
...0068 (2008-05-17 18h00m34s).bmp	9197	77.05	1.984
...0069 (2008-05-17 18h00m37s).bmp	9321	77.15	2.016
...0070 (2008-05-17 18h00m40s).bmp	9692	76.77	2.043
...0071 (2008-05-17 18h00m43s).bmp	9238	78.5	1.959
...0072 (2008-05-17 18h00m46s).bmp	8951	79.22	2.062
...0073 (2008-05-17	9448	77.34	2.069

18h00m49s).bmp			
...0074 (2008-05-17 18h00m52s).bmp	8986	77.47	2.1
...0075 (2008-05-17 18h00m56s).bmp	8330	78.37	1.943
...0076 (2008-05-17 18h00m59s).bmp	8642	76.46	1.955
...0077 (2008-05-17 18h01m02s).bmp	8807	77.53	2.005
...0078 (2008-05-17 18h01m05s).bmp	9102	76.57	1.994
...0079 (2008-05-17 18h01m08s).bmp	9662	75.87	2.059
...0080 (2008-05-17 18h01m11s).bmp	8955	77.45	2.1
...0081 (2008-05-17 18h01m14s).bmp	8694	77.23	2.103
...0082 (2008-05-17 18h01m17s).bmp	8285	77.15	1.835
...0083 (2008-05-17 18h01m20s).bmp	9065	73.96	1.8
...0084 (2008-05-17 18h01m24s).bmp	8668	76.6	1.954
...0085 (2008-05-17 18h01m27s).bmp	8979	75.06	1.914
...0086 (2008-05-17 18h01m30s).bmp	8662	75.07	1.912
...0087 (2008-05-17 18h01m33s).bmp	8484	75.58	2.009
...0088 (2008-05-17 18h01m36s).bmp	9027	75.95	1.968
...0089 (2008-05-17 18h01m39s).bmp	8964	76.09	1.928
...0090 (2008-05-17 18h01m42s).bmp	8385	76.02	1.962
...0091 (2008-05-17 18h01m45s).bmp	9351	75.34	2.116
...0092 (2008-05-17 18h01m49s).bmp	9264	75.34	1.933
...0093 (2008-05-17 18h01m52s).bmp	9440	74.95	2.036
...0094 (2008-05-17 18h01m55s).bmp	9229	74.44	2.035
...0095 (2008-05-17 18h01m58s).bmp	9203	74.96	2.055
...0096 (2008-05-17 18h02m01s).bmp	9457	75.52	2.019
...0097 (2008-05-17 18h02m04s).bmp	9219	76.66	1.943
...0098 (2008-05-17	9331	76.77	2.001

18h02m07s).bmp			
...0099 (2008-05-17 18h02m10s).bmp	9485	75.57	1.989
...0100 (2008-05-17 18h02m13s).bmp	9111	75.94	2.053

Tabelle der statistischen Daten

mit Ingeniumbehandlung

	Fläche	Mittlere Intensität	Entropie der Isolinie
Anzahl	100	100	100
Summe	1.251e+006	8519	203
Minimum	8769	73.84	1.851
Maximum	1.751e+004	101.3	2.201
Mittelwert	1.251e+004	85.19	2.03
RMS	1898	7.191	0.07465
Median	1.206e+004	83.66	2.038
25-Quantil	1.094e+004	79.31	1.986
75-Quantil	1.416e+004	90.74	2.075
Schiefe	0.4204	0.7838	-0.27
Wölbung	-0.5187	-0.4711	-0.2035
Konfidenzintervall	372.1	1.41	0.01463
Entropie	2.09	2.041	2.106
Fraktalität	1.315	1.263	1.799
RMS der Fraktalität	0.1502	0.1073	0.06454

neutral

	Fläche	Mittlere Intensität	Entropie der Isolinie
Anzahl	100	100	100
Summe	1.002e+006	7859	203.3
Minimum	8285	73.96	1.8
Maximum	1.491e+004	96.11	2.214
Mittelwert	1.002e+004	78.59	2.033
RMS	1260	3.533	0.08553
Median	9696	77.75	2.027
25-Quantil	9279	76.66	1.98
75-Quantil	1.023e+004	78.82	2.099
Schiefe	1.725	2.357	-0.1535
Wölbung	3.396	7.092	-0.118
Konfidenzintervall	247	0.6927	0.01677
Entropie	1.713	1.492	2.1
Fraktalität	1.617	1.677	1.909
RMS der Fraktalität	0.04942	0.06122	0.07285

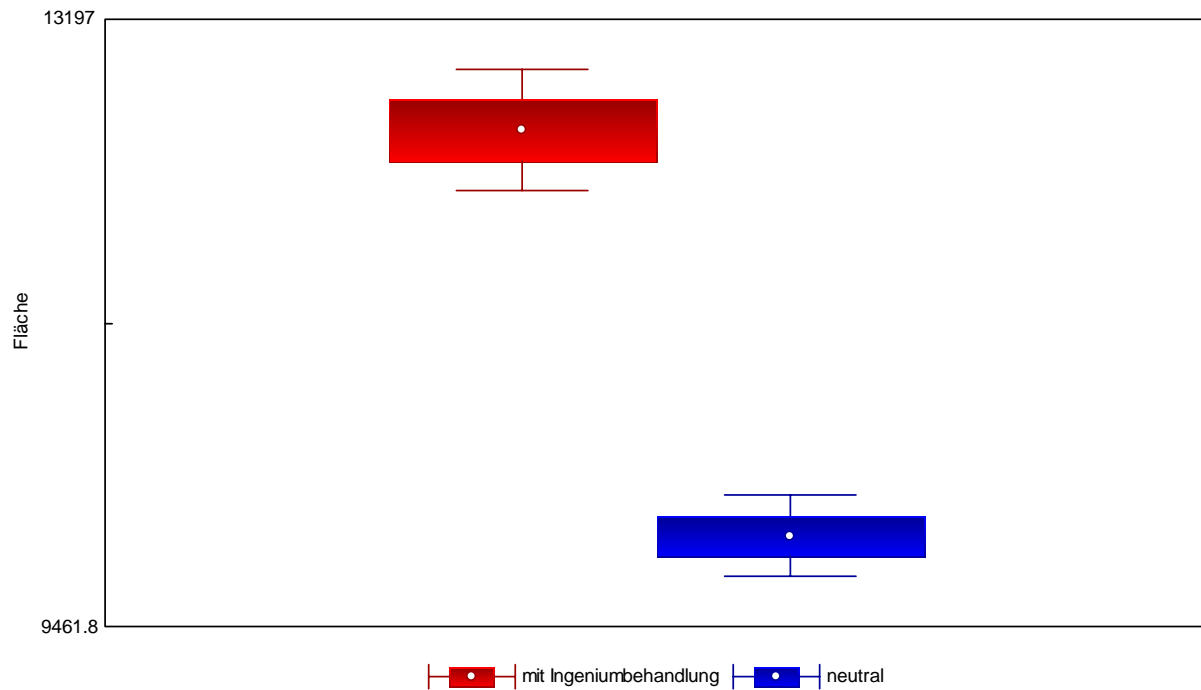
Die Ergebnisse des statistischen Vergleichs

Statistischer Vergleich von 2 unabhängig Ereignissen wurde fertiggestellt unter Verwendung von Parametrische Tests: Student-Test

Student-Test

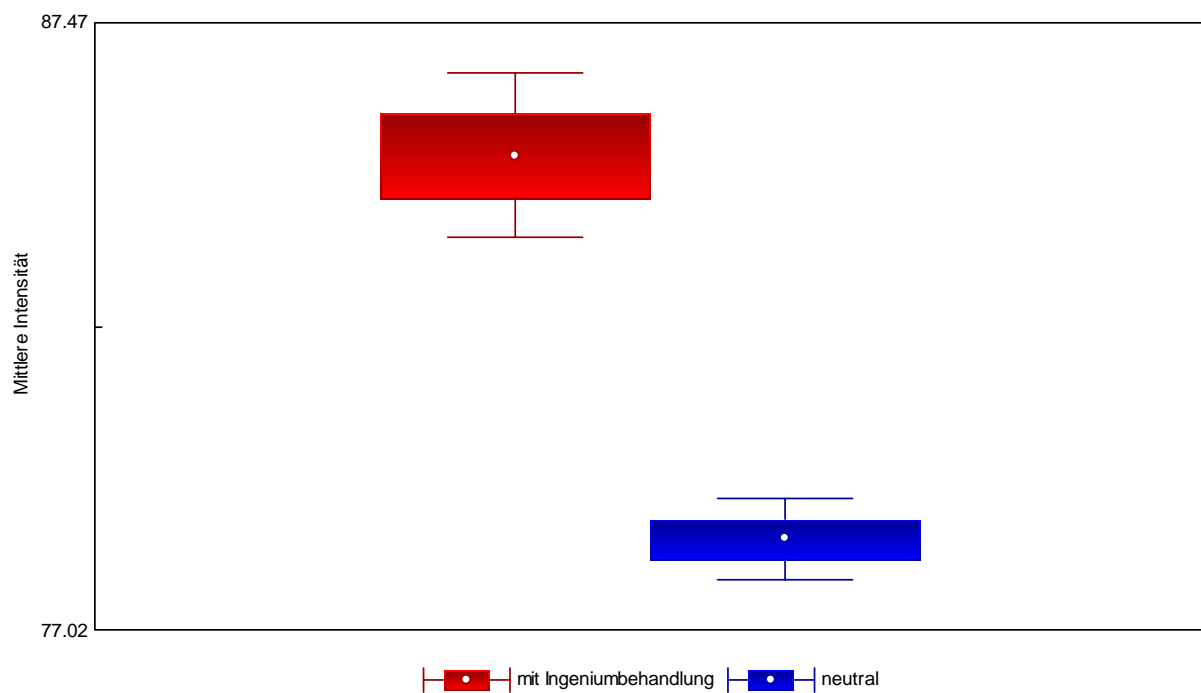
Fläche

Gemäß TestStudent-Test Ereignisse sind statistisch signifikant ungleich; $p = 0$



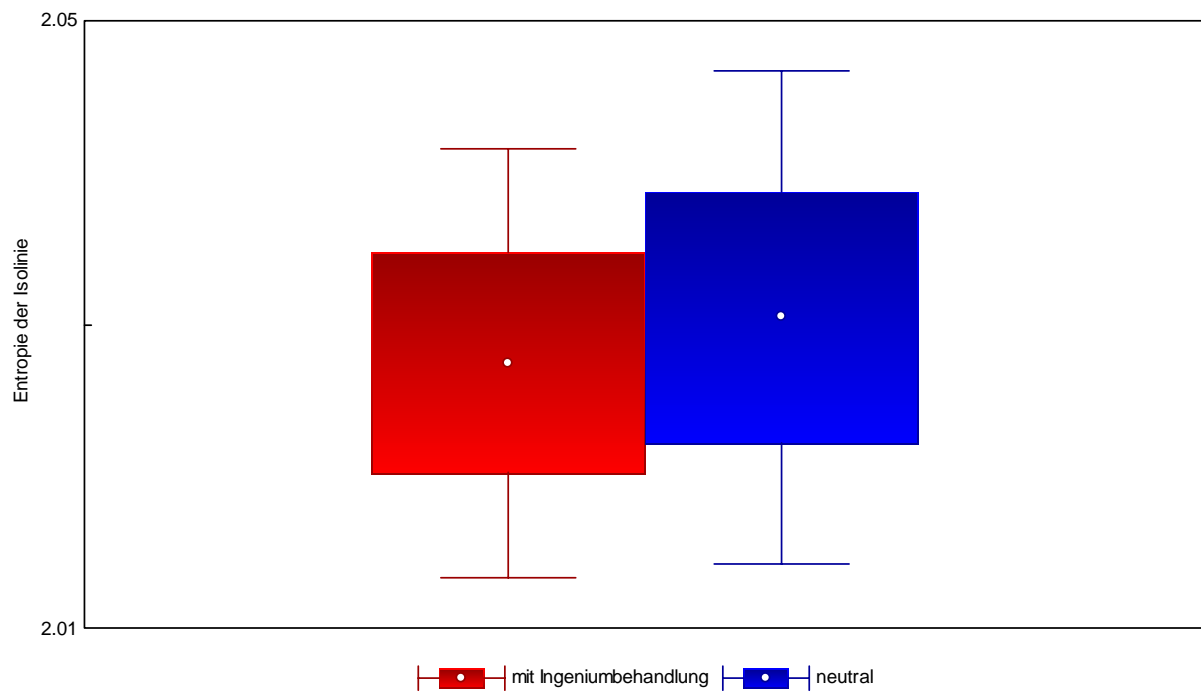
Mittlere Intensität

Gemäß TestStudent-Test Ereignisse sind statistisch signifikant ungleich; $p = 0$



Entropie der Isolinie

Gemäß TestStudent-Test Ereignisse besitzen keine statistisch signifikanten Unterschiede; $p = 0$



	Fläche	Mittlere Intensität	Entropie der Isolinie
ranks1	1.386e+004	1.337e+004	1.002e+004
ranks2	6239	6734	1.008e+004
criterion	8812	8316	5028
z-value	9.313	8.102	0.06841
p-value	2.22e-016	3.331e-016	0.9455